

NEIL MARINE

NMDF-60 MULTI PURPOSE FISHING BOAT

DESIGNED FOR LONG LINE, BOTTOM & DROP LINE, GILL NETTING & PURSE SEINE

STANDARD BOAT SPECIFICATION

MOULDED WITH ISOPHTHALIC GELCOAT AND RESIN USING ONLY LLOYDS REGISTER OF SHIPPING(UK) OR INTERNATIONAL ASSOCIATION OF CLASSIFICATION SOCIETIES MEMBER TYPE APPROVED MARINE GRADE FIBRE GLASS MATERIAL

HULL-FIBRE GLASS HULL REINFORCED WITH POLY URETHANE FOAM TRANSVERSE FRAMES AND LONGITUDINALS GLASSED

DECK -FIBRE GLAS DECK WITH MOULDED NON SKID SURFACE REINFOCED WITH HARD WOOD DECK BEAMS AND POLYURETHANE LONGITIDINALS GLASSED OVER

Length Overall	60'-00" (18.0 Mtrs.)
Beam	18'-00" (5.60 Mtrs.)
Draft(Unladen)	6'-00" (1.80 Mtrs.)
Displacement (Light)	32 Tons .approx.
(Loaded)	71 Tons. approx.
Recommended Engines HP	320-480 HP
Polyurethane foam Insulated Fish/Hold Capacity	26 M3
Polyurethane foam Insulated Bait Hold Capacity	06M3
Polyurethane foam Insulated Slurry Tank Capacity	07M3
Fuel Tanks Capacity(GRP hull wing tanks)	10000 Ltrs.
Fresh Water Tanks Capacity(GRP hull wing tanks)	3000 Ltrs.
Number of Crew	10 Crew

Vessels Lay out as per General Arrangement Drawing No.60NMDF/FV/GA/14/758 consist of Fore peak, Bait Hold, Fish Hold Slurry Tanks, Engine Room & Rudder hull compartments

Forward deck crew cabin with 6 bunks and lockers.

Wheel House fitted aft with Chart Table, Helm console with wheel,4 crew bunks, Galley with a cooker and sink, Toilet Compartment with a marine WC and a wash basin.

Bait Hold, Fish Hold /Slurry Tanks could be re arranged to meet different customer fishing requirements .

24 Volts DC main electrical system with 2 x200 amp Battery Banka for engine start and lighting & equipment

Vessels lighting consist standard vessel lights ,navigation and fishing lights.

Pressure fresh water system with tap outlets in galley and toilet

OPTIONS (EXTRAS NOT INCLUDED IN THE STANDARD BOAT PRICE)

Bow Pulpit stainless steel rail

Bow Roller stainless steel

Mast and Derrick

Fwd. Deck Canvas Canopy on stainless steel tubular frame work

GRP Radar Mast

Wheel house Hood Railing

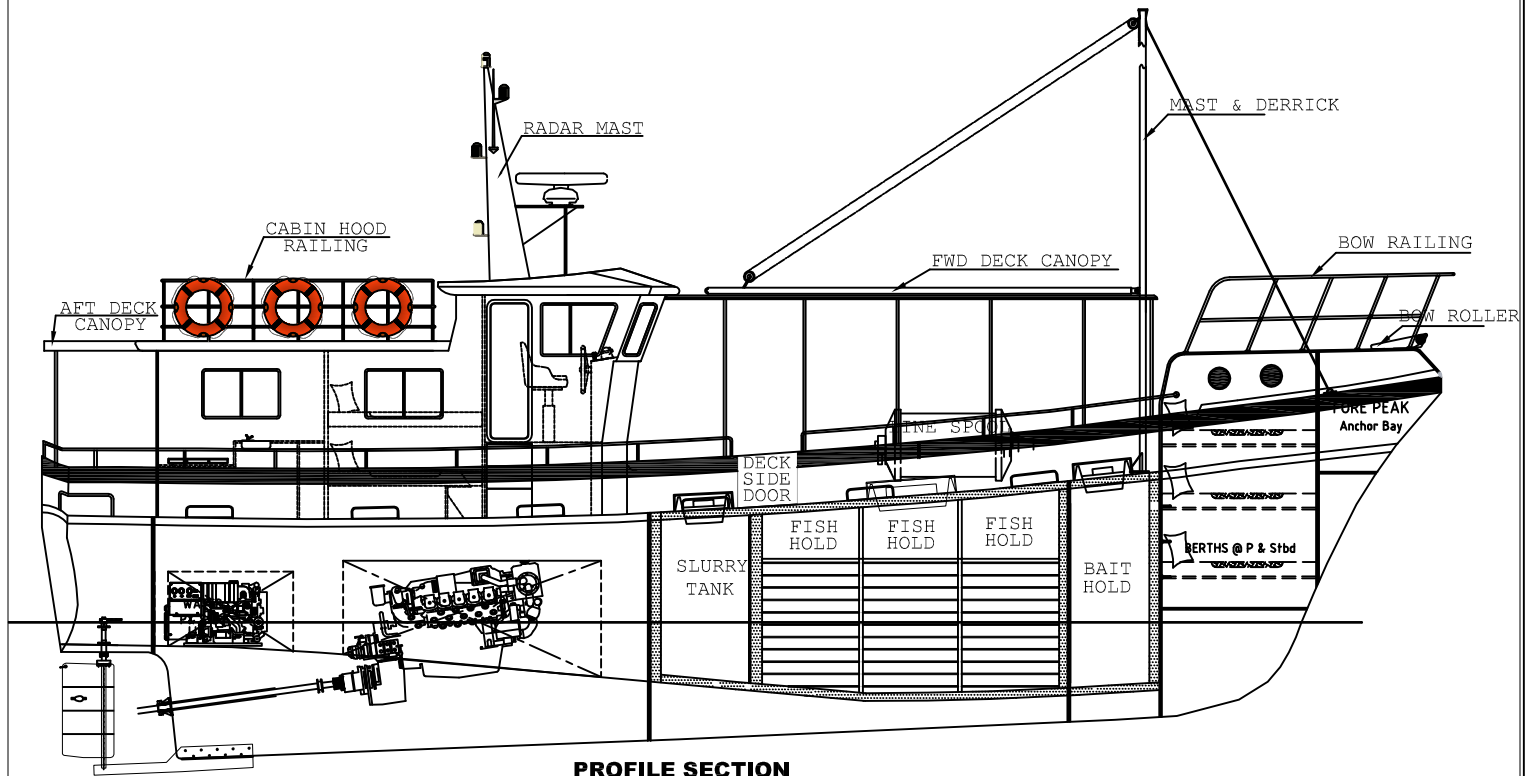
Aft. Deck Canvas Canopy on stainless steel tubular frame work

Fishing Equipment & Fishing Gear

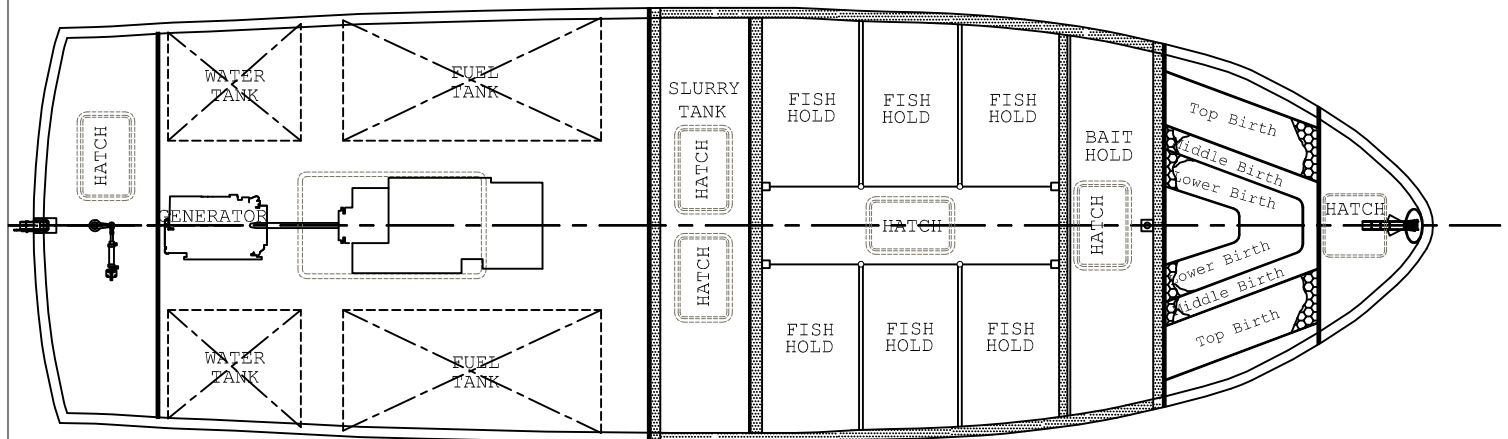
Fish Holds Refrigeration/Ice Maker machine/Aux. AC Generator

Navigational and Communication Equipment/Auto Pilot

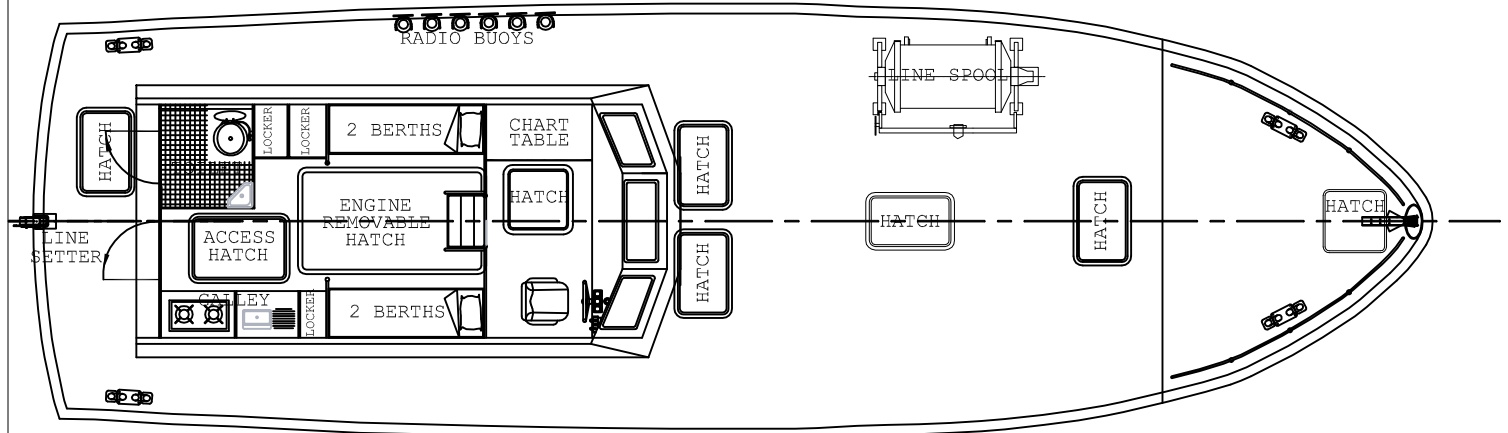
NMDF60 MULTIPURPOSE FISHING BOAT



PROFILE SECTION




BELOW DECK PLAN



DECK PLAN

PRINCIPLE DIMENSIONS

L. O. A.	60' 00"	18.00 M
BREADTH	18' 00"	5.60 M
DRAFT (UNLADEN)	6' 00"	1.80 M
DISPLACEMENT (Light)	32 TONS.	(Approx.)
DISPLACEMENT (Loaded)	71 TONS.	(Approx.)

NO	07.08.14	PRELIMINARY ISSUE	THILINI		
REV.	DATE	DESCRIPTION	DRAWN	CHKD.	APPROVED
All Rights Reserved			 NEIL MARINE NEIL FERNANDO & CO. NEGOMBO, SRI LANKA. www.Neil-Marine.com		
TITLE : GENERAL ARRANGEMENT					
DRG No : 60NMDF/FV/GA/14/758					
BOAT MODEL : 18Mtr Freemast					
SCALE : 1:1.5		SHT. : 1 OF 1		REV. : 0	