

# NEIL MARINE

## NMDF-75 MULTI PURPOSE FISHING BOAT

DESIGNED FOR LONG LINE, BOTTOM & DROP LINE, GILL NETTING, PURSE SEINE.

### STANDARD BOAT SPECIFICATION

**HULL**-FIBRE GLASS HULL REINFORCED WITH POLY URETHANE FOAM TRANSVERSE FRAMES AND LONGITUDINALS GLASSED

**DECK** -FIBRE GLAS DECK WITH MOULDED NON SKID SURFACE REINFOCED WITH HARD WOOD DECK BEAMS AND POLYURETHANE LONGITIDINALS GLASSED OVER

MOULDED WITH ISOPHTHALIC GELCOAT AND RESIN USING ONLY LLOYDS REGISTER OF SHIPPING (UK) OR INTERNATIONAL ASSOCIATION OF CLASSIFICATION SOCIETIES MEMBER TYPE APPROVED MARINE GRADE FIBRE GLASS MATERIAL

Length Overall	75Ft.6 inch (23.0 Mtrs.)
Beam	18Ft 0 inch ( 5,5 Mtrs.)
Draft(Unladen)	4 Ft 11 inch ( 1.5 Mtrs.)
Displacement (Light)	30 Tons.approx.
(Loaded)	65Tons.approx.
Recommended Engines HP	320 HP
Polyurethane foam Insulated Fish/Hold Capacity	M3
Polyurethane foam Insulated Bait Hold Capacity	M3
Storage Hold Capacity	M3
Fuel Tanks Capacity(GRP hull wing tanks)	8700 Ltrs.
Fresh Water Tanks Capacity(GRP hull wing tanks)	2500 Ltrs.
Number of Crew	06-08 Crew



**Vessels Lay out as per General Arrangement Drawing No.**

**consist of**

Fore Peak, Fwd.Cabin, Bait Hold, Fish Hold, Storage Hold, Engine Room & Aft Peak Rudder Hull compartments

Forward deck crew cabin with 4 bunks and lockers.

Wheel House fitted aft with Chart Table ,Helm console with wheel,4 crew bunks, Galley with a cooker and Sink ,Dining Area with table and Toilet Compartment with a marine WC,shower and a wash basin.

Fish Hold ,Bait Hold arrangement could be re arranged to meet different customer fishing requirements .

24 Volts DC main electrical system with 2 x200 amp Battery Banka for engine start and lighting & equipment

Vessels lighting consist standard vessel lights ,navigation and fishing lights.

Pressure fresh water system with tap outlets in galley and toilet

**OPTION**

Bow Pulpit stainless steel rail

Mast and Derrick

Fwd. Deck GRP Canopy on stainless steel tubular frame work

GRP Radar Mast

Wheel house Hood Railing

Aft. Deck GRP Canopy on stainless steel tubular frame work

Fishing Equipment & Fishing Gear

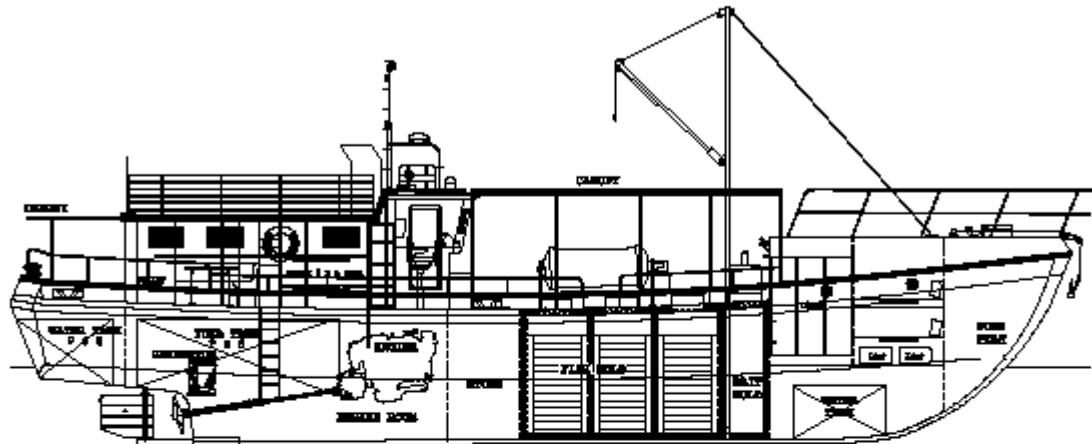
Fish Holds Refrigeration/Ice Maker machine/Aux. AC Generator

Navigational and Communication Equipment /Auto Pilot

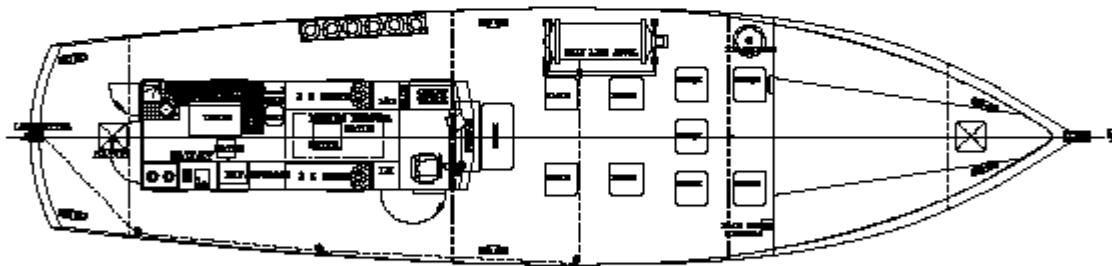


**NMDF 75 MULTI DAY FISHING BOAT**

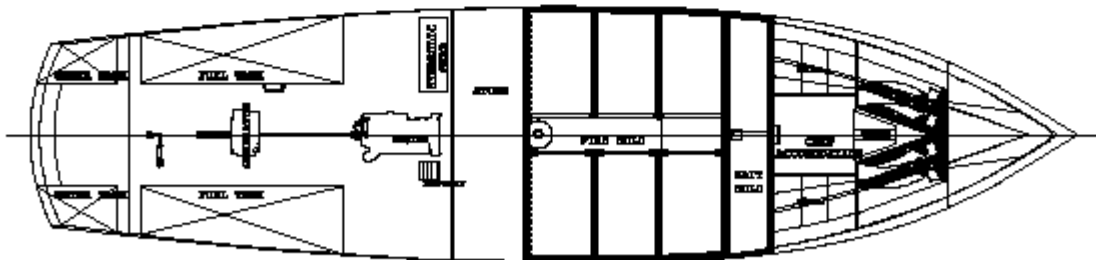
**NMDF76 MULTIPURPOSE FISHING VESSEL**



**GENERAL ELEVATION**



**DECK PLAN**



**BELOW DECK PLAN**